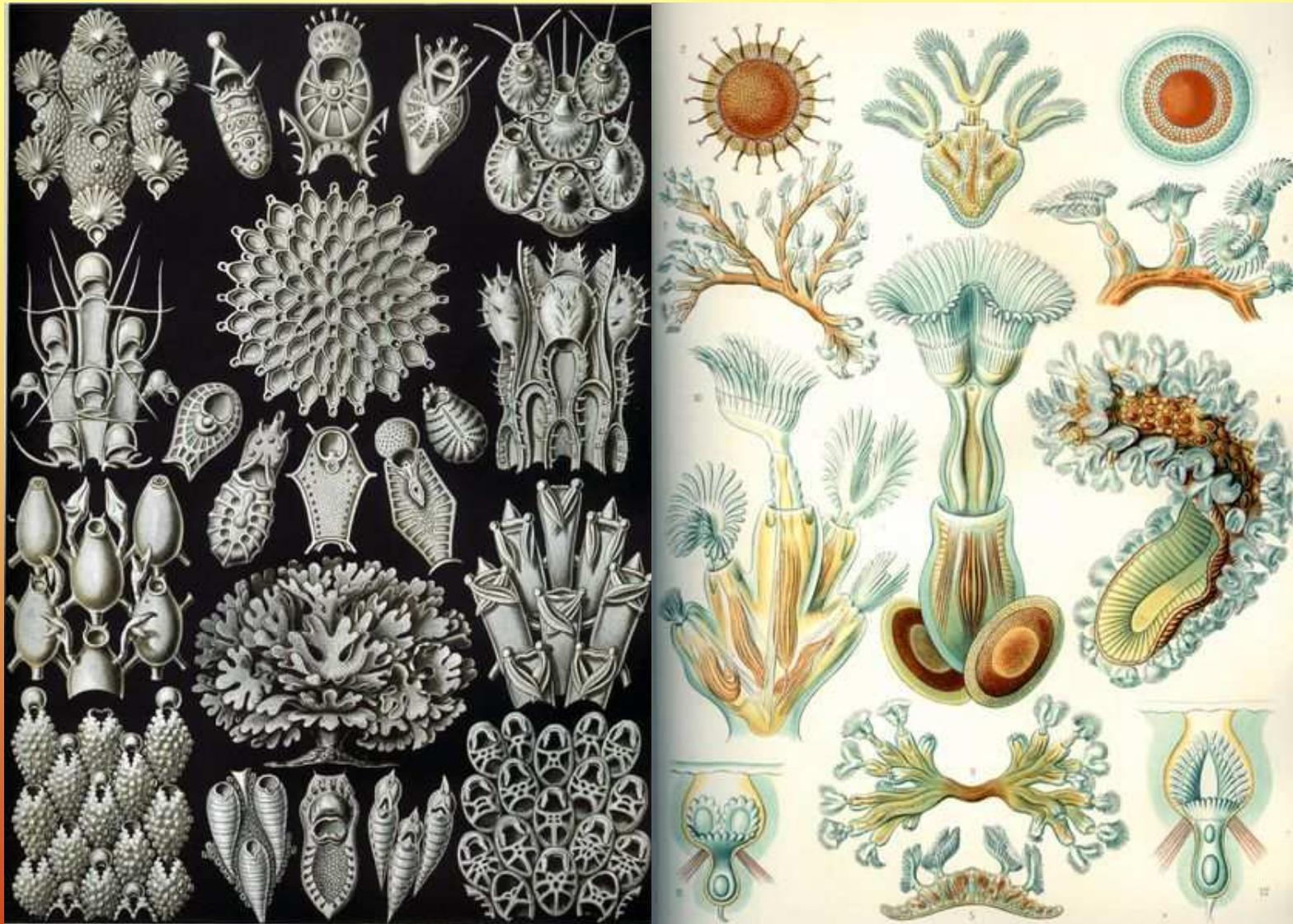


Bryozoa (Mečovci)



<http://www.biolib.cz>

<http://tolweb.org/tree?group=Bryozoa>

http://www.nhm.ac.uk/hosted_sites/iba/

<http://tolweb.org/tree?group=Brachiopoda>

<http://en.wikipedia.org/wiki/Brachiopod>

<http://tolweb.org/tree?group=Chaetognatha>

<http://academic.evergreen.edu/t/thuesene/chaetognaths/chaetognaths.htm>

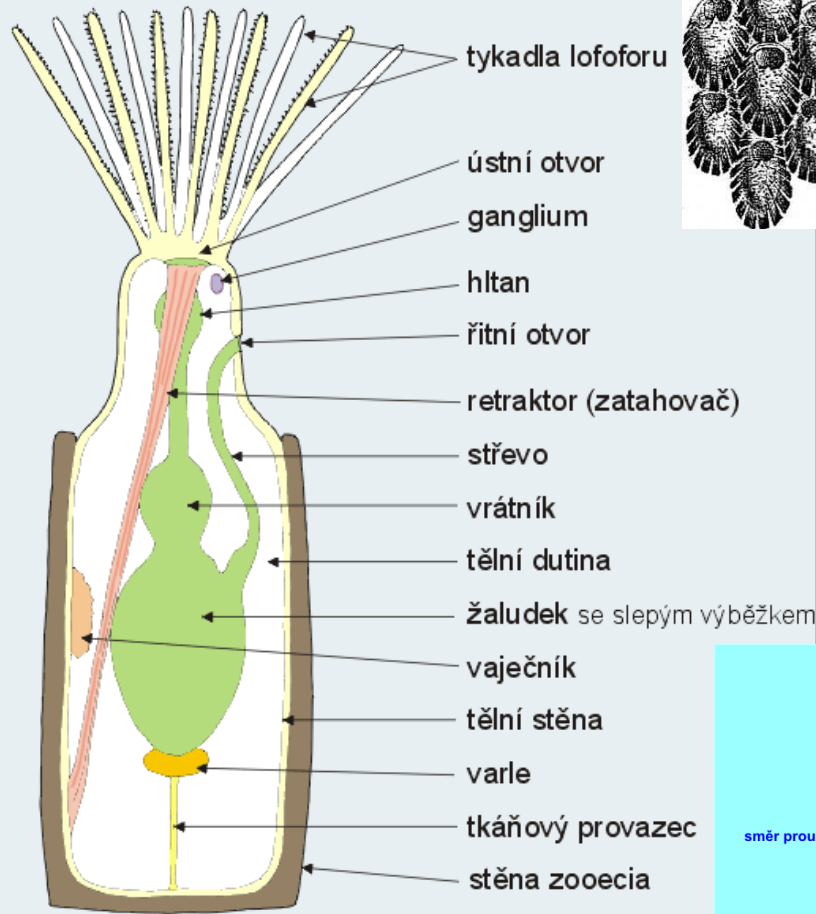
<http://nlbif.eti.uva.nl/bis/chaetognatha.php>

<http://www.stranypotapecske.cz/biologie/default.asp>

<http://www.kbi.zcu.cz/studium/invert/obra.php>

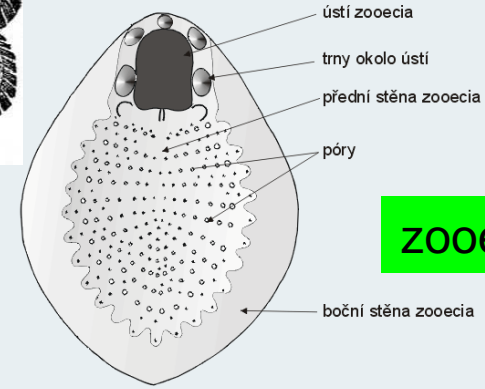


Kmen: Bryozoa (MECHOVCI)

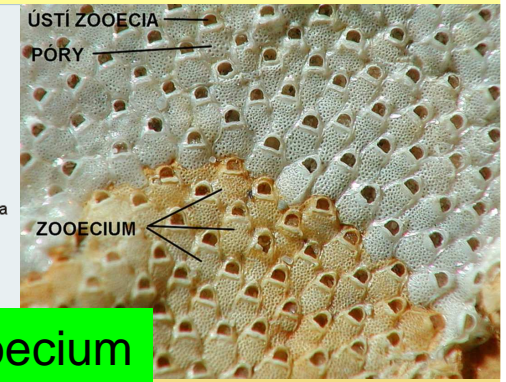


Stavba těla

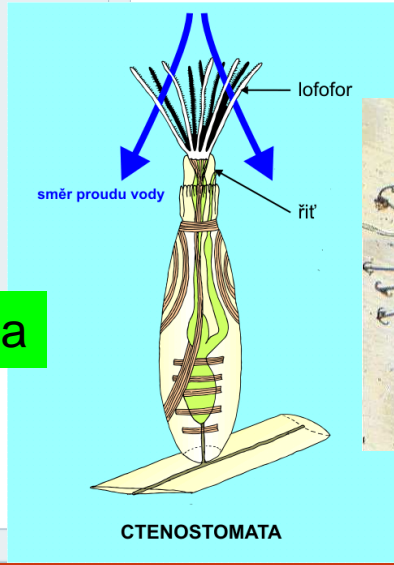
Kmen Bryozoa
 schematická stavba zooida mechovky
 (podle Barnes et al. 1991, upraveno)



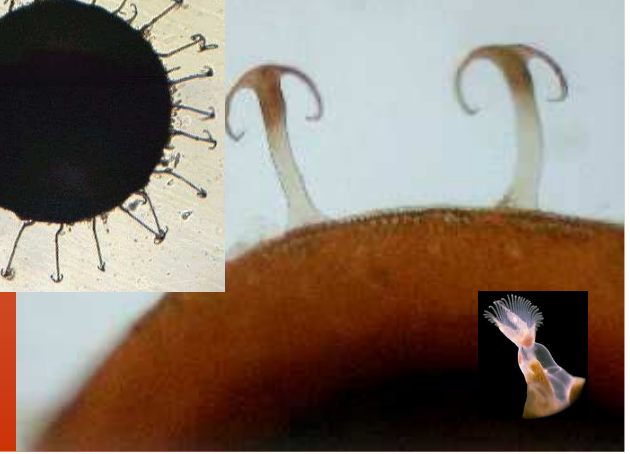
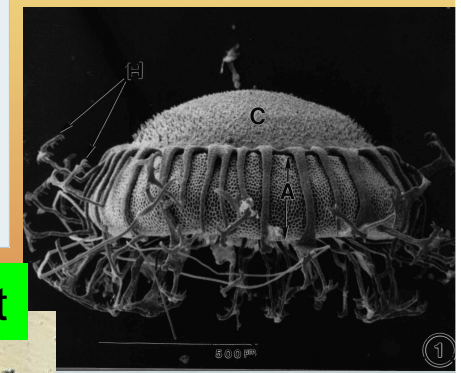
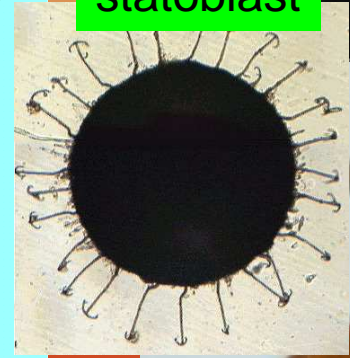
zooecium



Kmen Bryozoa
 schematická stavba zooecia cheilostomátní mechovky



statoblast



Kmen: Bryozoa (MECHOVCI)

Plumatella repens (mechovka plazivá), *Cristatella mucedo* (m. hadovitá)
Pectinatella (bochnatka), *Sertella*, *Myriapora*



Kmen: Brachiopoda (RAMENONOŽCI)

Lingula anatina (jazovka stopkatá)

Kmen: Chaetognatha (PLOUTVENKY)

Spadella, *Sagitta*



Kmen: Bryozoa (MECHOVCI)

Plumatella repens (mechovka plazivá)

Cristatella mucedo (m. hadovitá)

Pectinatella (bochnatka)

Sertella

Myriapora



Pectinatella



© - Josef Hasek
www.hasek.com
Pectinatella magnifica 419958



Plumatella repens



Cristatella mucedo



Myriapora

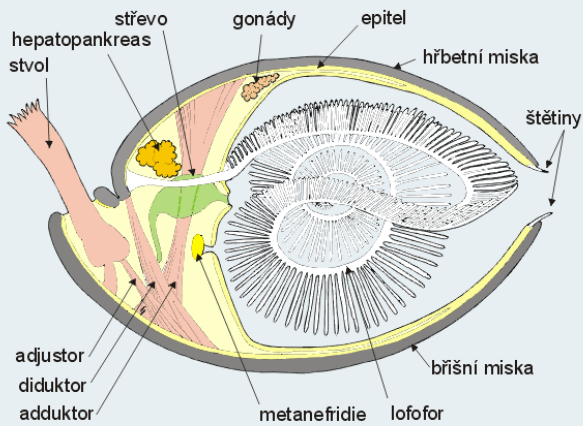


Sertella



Kmen: Brachiopoda (RAMENONOŽCI)

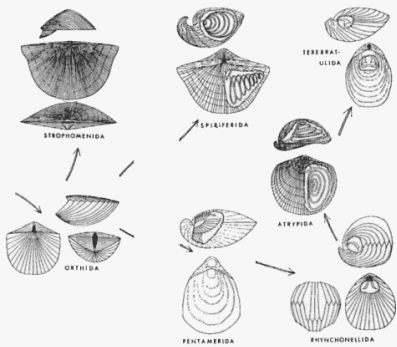
Lingula anatina (jazovka stopkatá)



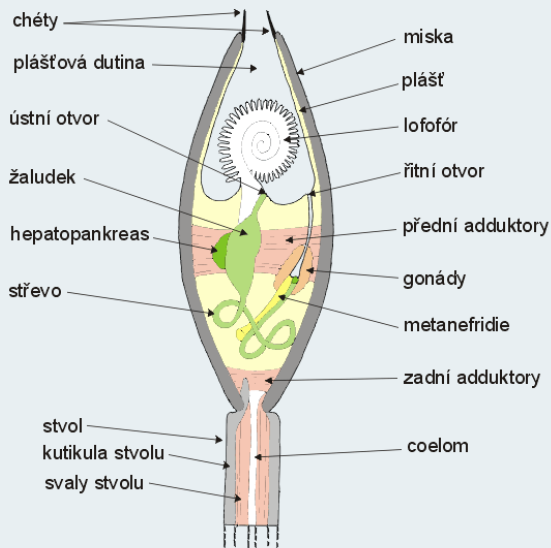
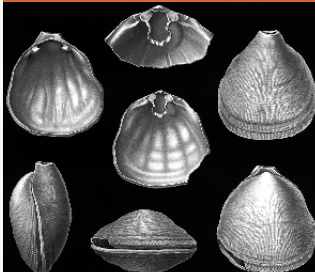
Kmen Brachiopoda
schematická stavba těla rhynchoneliiformního ramenonožce

(podle Barnes et al. 1991, upraveno)

Rudwig 1970, p. 22-23, Fig. 4

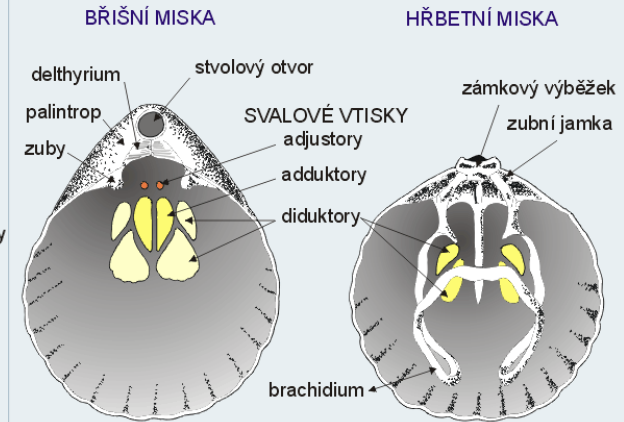
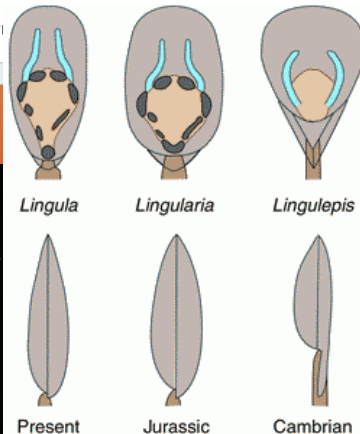


Stavba těla



Kmen Brachiopoda
schematická stavba těla linguliformního ramenonožce

(podle Bari)



Kmen Brachiopoda
vnitřní stavba misek rhynchoneliiformního ramenonožce

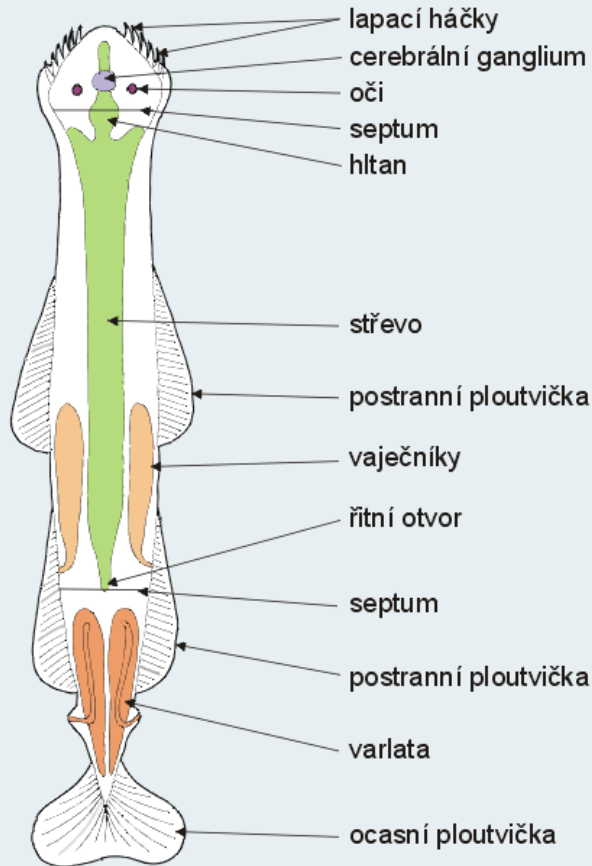
(podle Clarkson 2001, upraveno)

Lingula anatina



Kmen: Chaetognatha (PLOUTVENKY)

Spadella, Sagitta



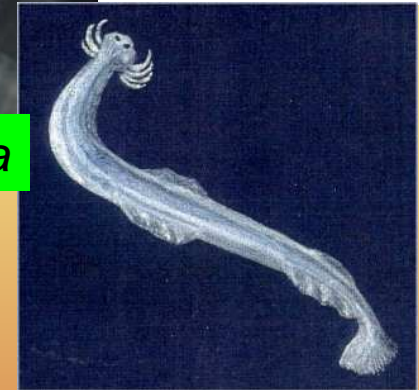
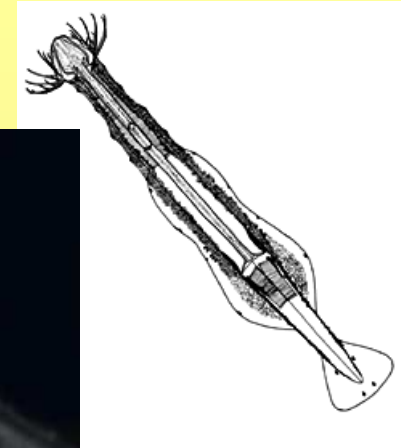
Kmen Chaetognatha
schematická stavba těla ploutvenky

(podle Barnes et al. 1991, upraveno)

Stavba těla

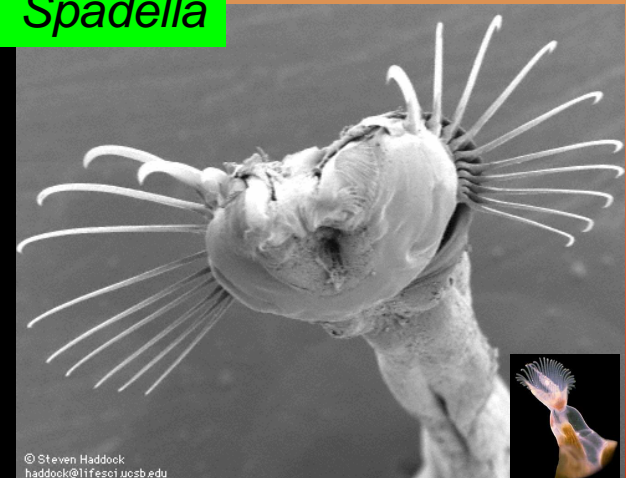


Sagitta



abyssoblu.com

Spadella



© Steven Haddock
haddock@lifesci.ucsb.edu

