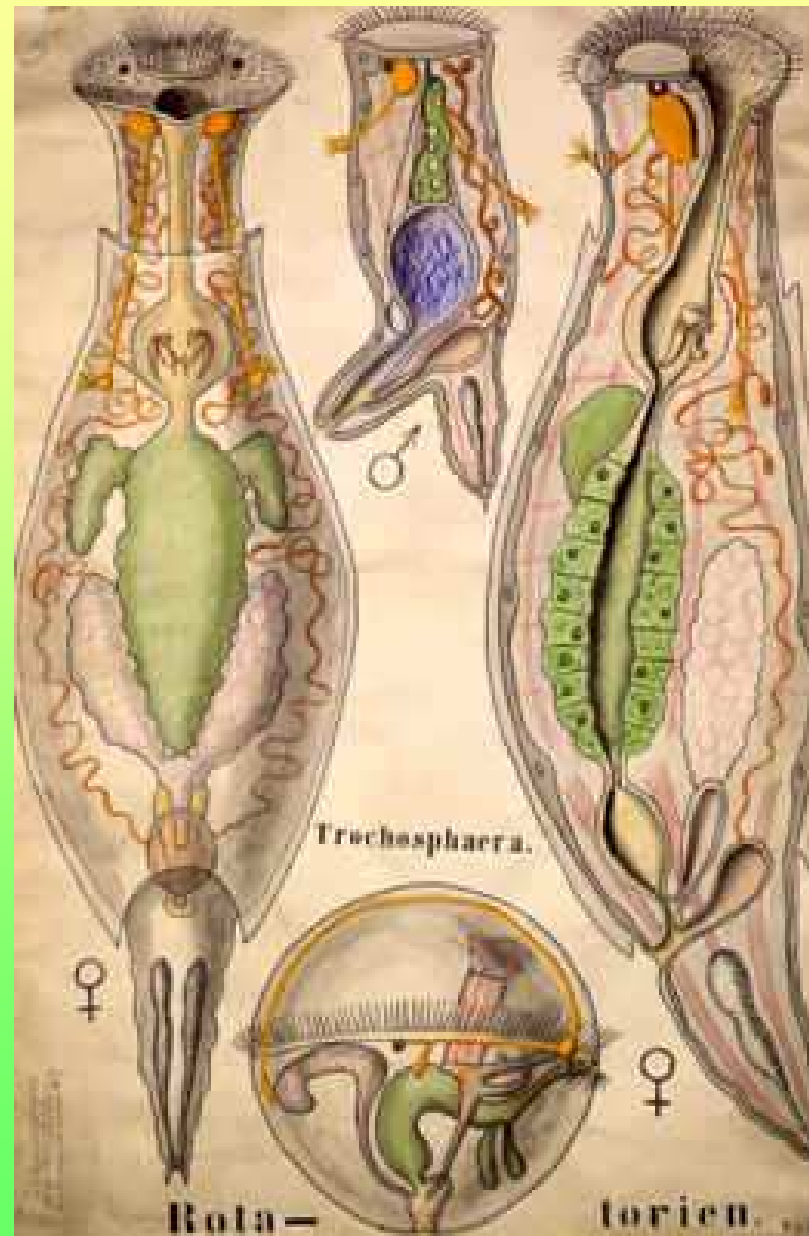


Rotifera (Vířníci)



<http://www.biolib.cz>

<http://tolweb.org/tree?group=Rotifera>

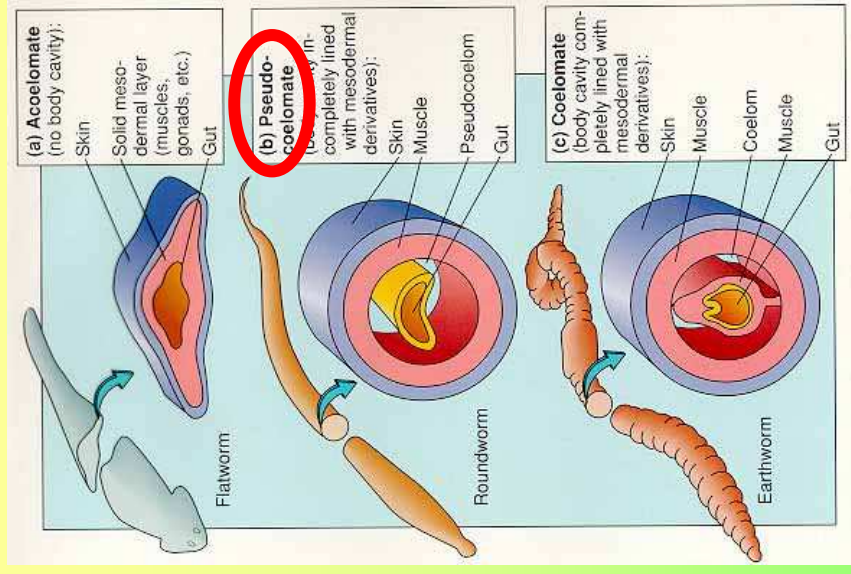
<http://en.wikipedia.org/wiki/Rotifera>

<http://www.micrographia.com/specbiol/rotife/homebde/bde0100.htm>

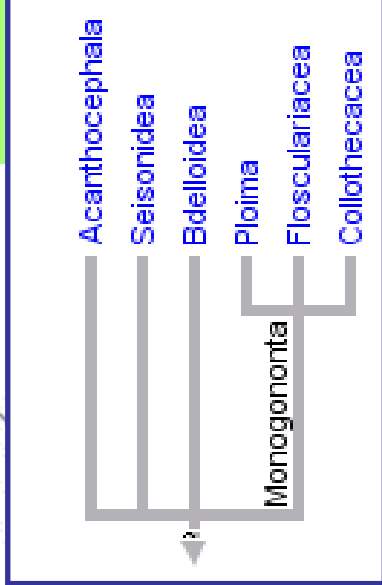
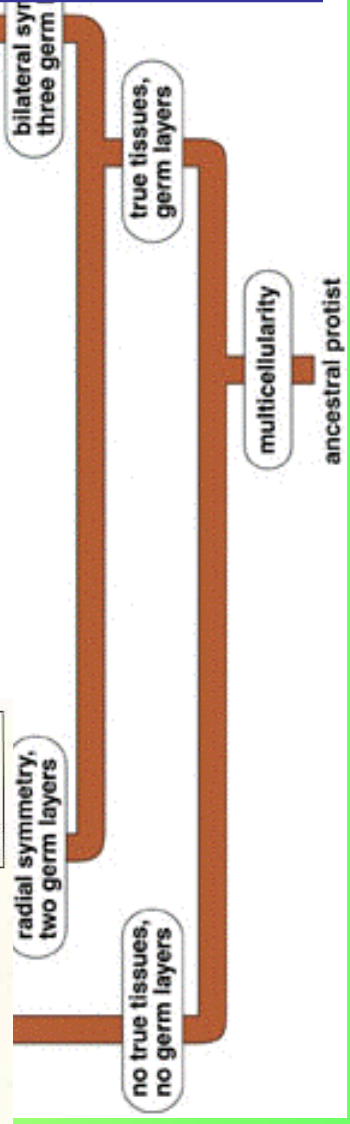
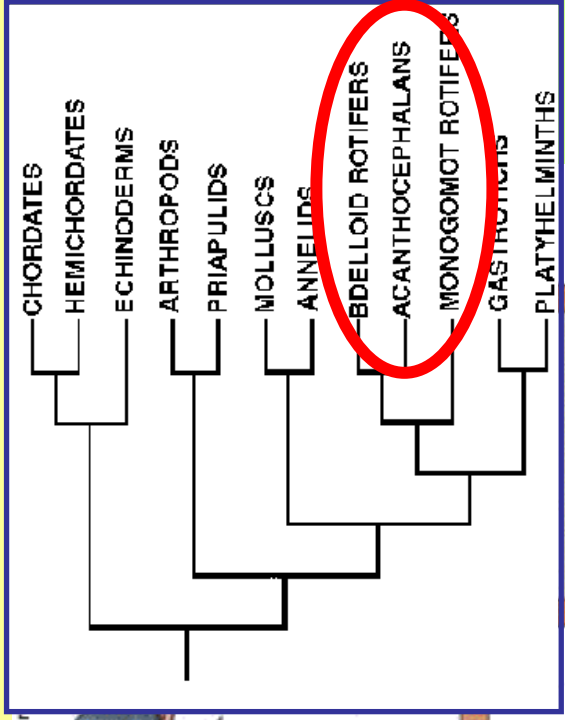
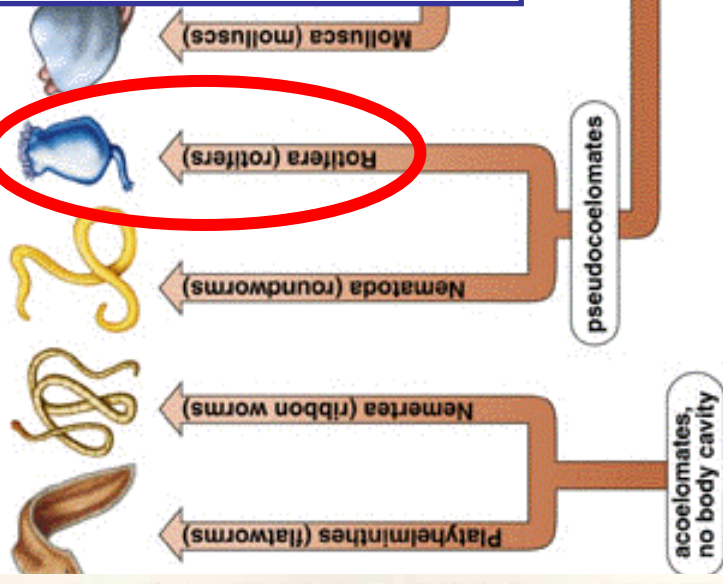
<http://www.upb.cas.cz/pracovnici/devetter/databaze/index.php?ev=1&article=4>

<http://www.kbi.zcu.cz/studium/invert/obra.php>



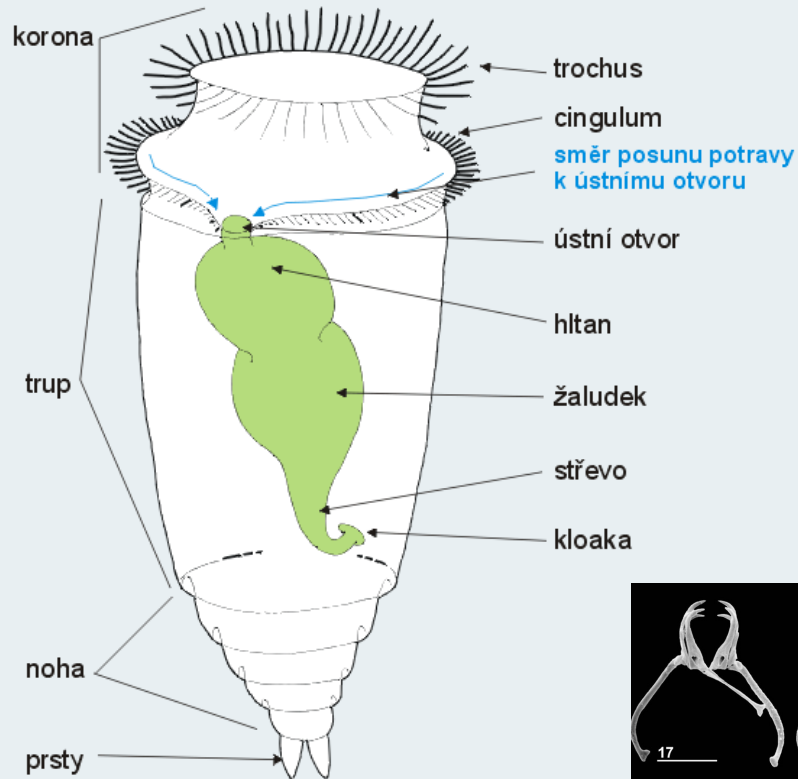


© The McGraw-Hill Companies, Inc. Permission required for reproduction.



Kmen: Rotifera (VÍŘNÍCI)

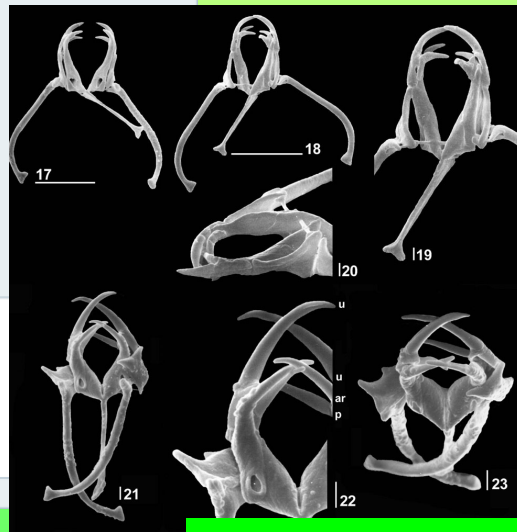
životní cyklus



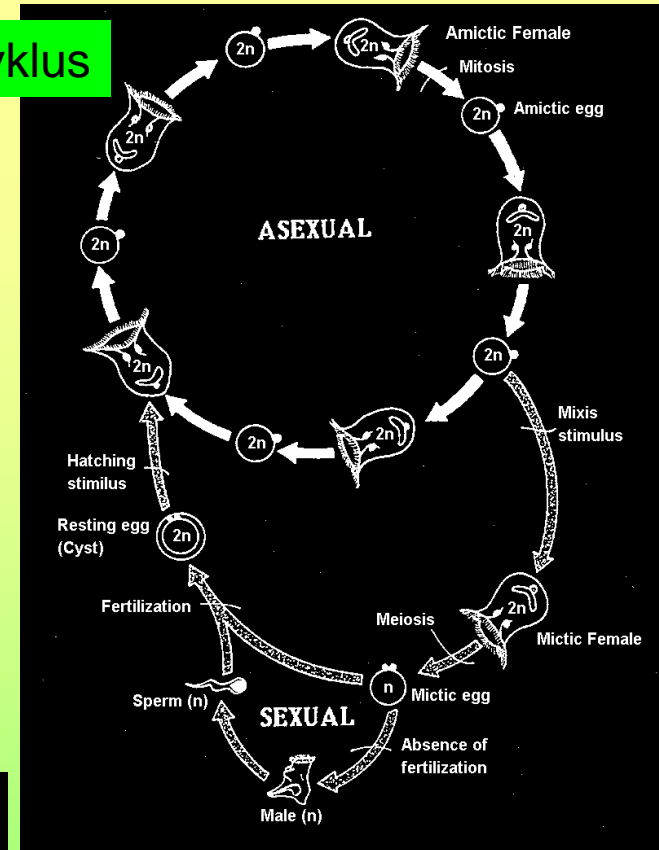
Kmen Rotifera
základní stavba těla vířníků

(podle Barnes et al. 1991, upraveno)

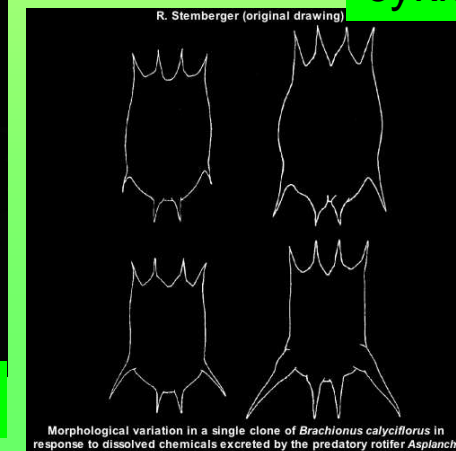
Stavba těla



žvýkací aparát



cyklomorfóza



Kmen: Rotifera (VÍŘNÍCI)

Třída: Bdelloidea (pijavenky)

Třída: Seisonidea

Třída: Monogononta (točivky)

Brachionus (obrněnka), *Keratella* (hrotenka), *Asplanchna* (vakovenka)

Kmen: Acanthocephala (VRTEJŠI)

Acanthocephalus lucii, *Echinorhynchus*



Kmen: Rotifera (VÍŘNÍCI)

Brachionus (obrněnka)

Keratella (hrotěnka)

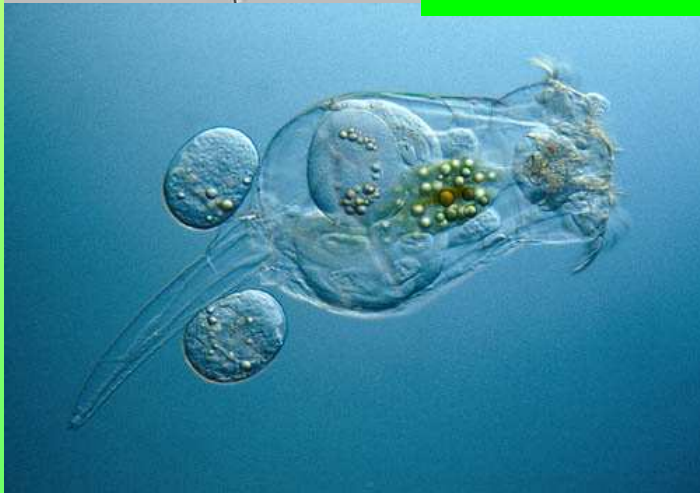
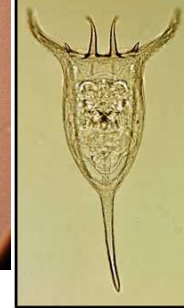
Asplanchna (vakovenka)



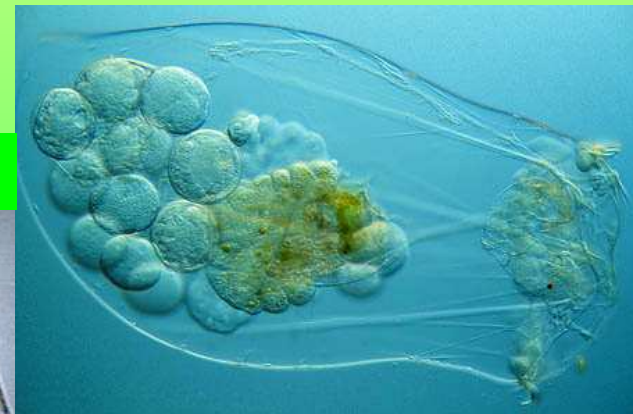
Brachionus



Keratella



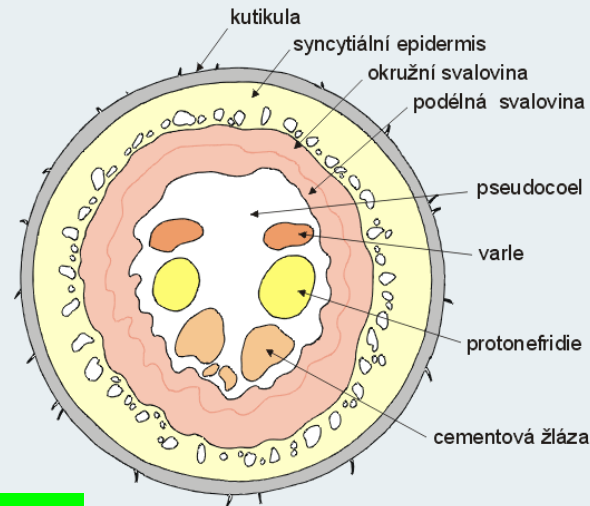
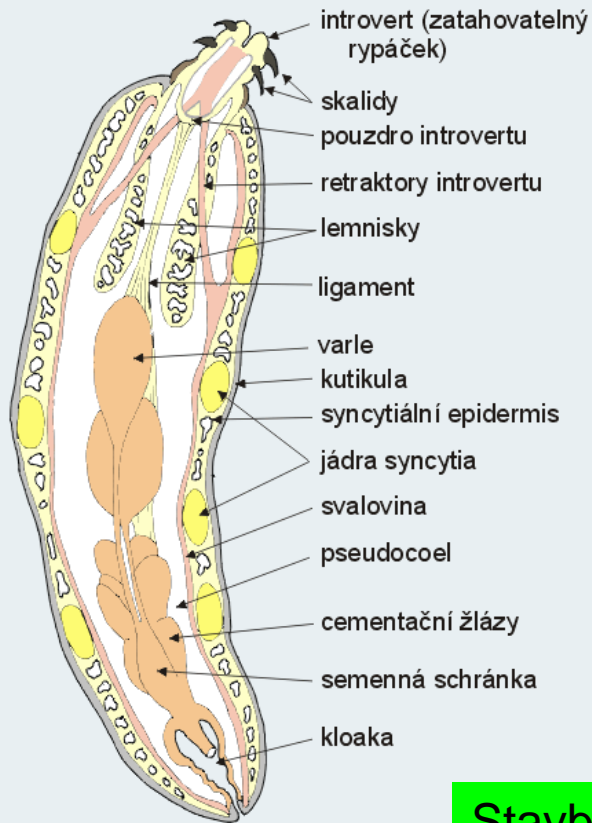
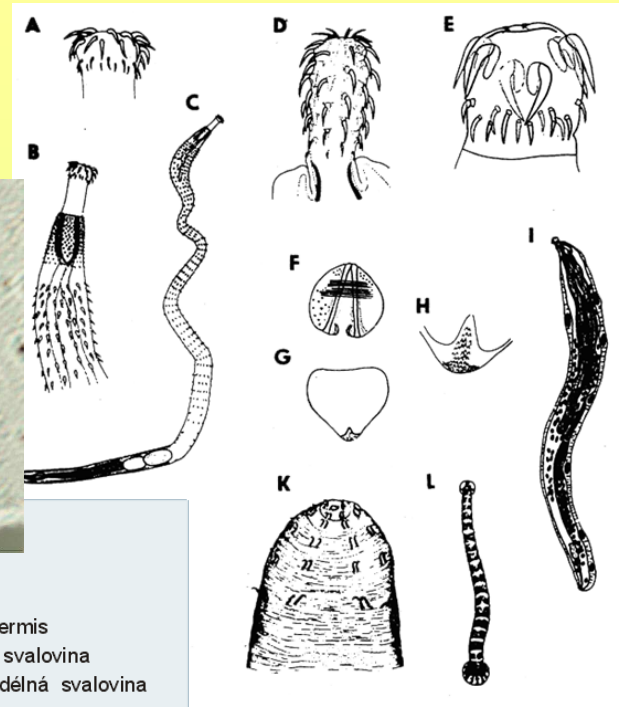
Asplanchna



Kmen: Acanthocephala (VRTEJŠÍ)

Acanthocephalus lucii
Echinorhynchus

introvert



Stavba těla

Kmen Acanthocephala
stavba těla typického vrtejše (sameček)

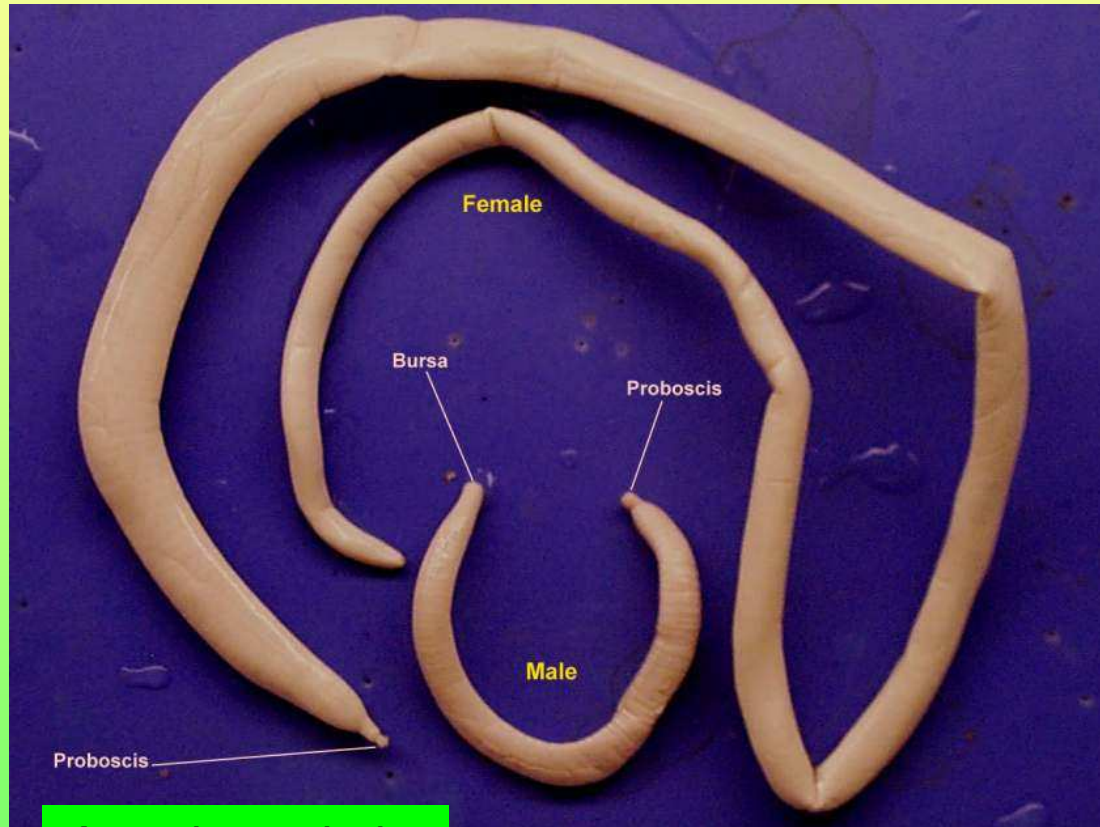
(podle Barnes et al. 1991, upraveno)

Kmen Acanthocephala
příčný řez tělem typického vrtejše

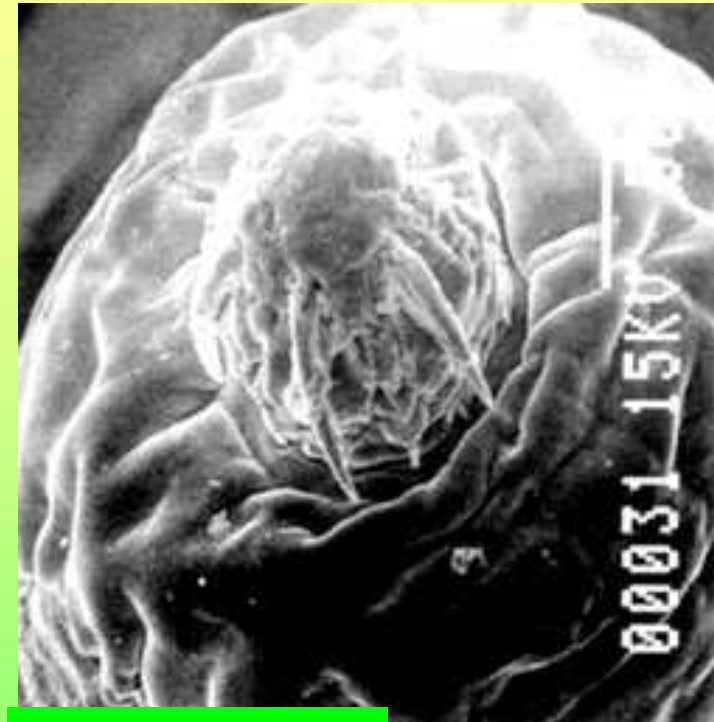


Třída: Acanthocephala (VRTEJŠÍ)

Acanthocephalus lucii
Echinorhynchus



Acanthocephalus



Echinorhynchus





10 μm